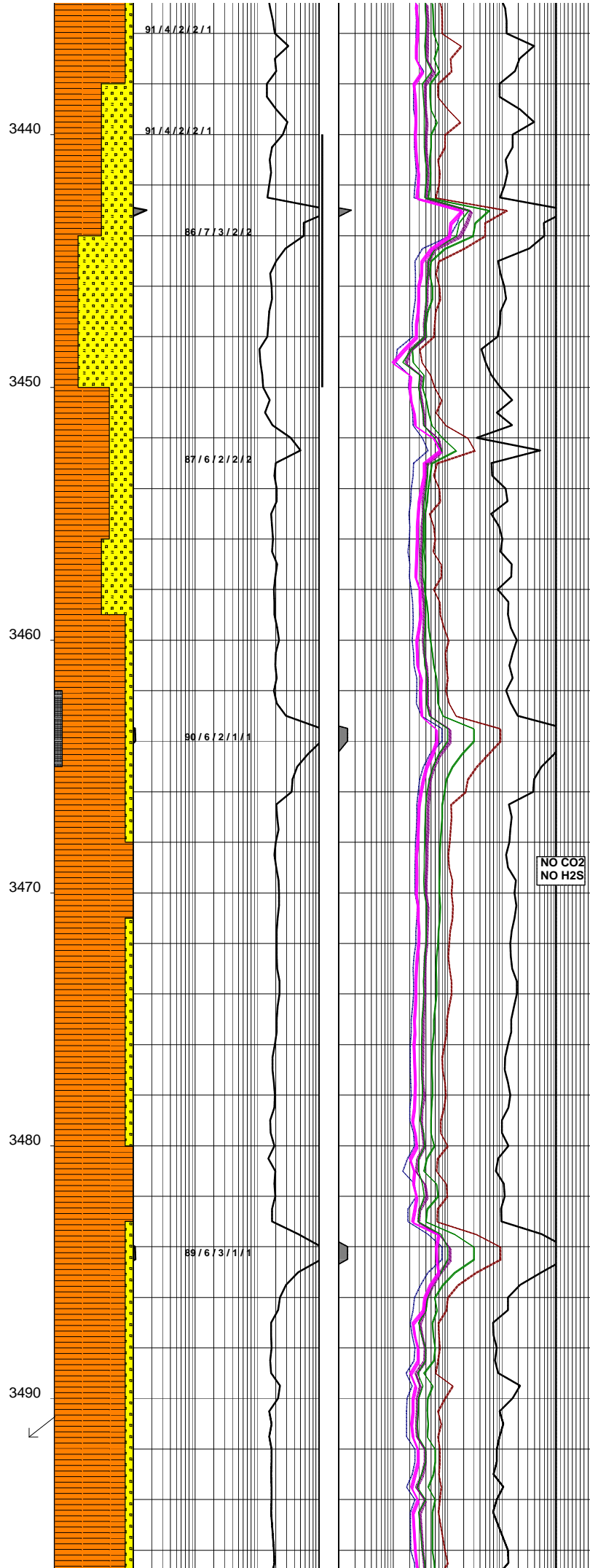


CK: 1
Sol: 9.8
pH: 9
Cl: 171k

WOB: 3-4 klbs
RPM: 131-190
SPP: 3100-3300 psi
FLW: 245 gpm

WOB: 4-6 klbs
RPM: 131-190
SPP: 3100-3300 psi
FLW: 245 gpm

WOB: 2-7 klbs
RPM: 131-190
SPP: 3100-3300 psi
FLW: 245 gpm



91 / 4 / 2 / 2 / 1

91 / 4 / 2 / 2 / 1

86 / 7 / 3 / 2 / 2

87 / 6 / 2 / 2 / 2

90 / 6 / 2 / 1 / 1

89 / 6 / 3 / 1 / 1

FLUOR:3441m-3450m;Tr-10%
The fracture infill material has dull yellow mineral flour and trace dull to moderate bright very pale yellow white oil flour giving weak dull milky white crush cut flour.The Sandstone has no intergranular oil flour. The Coaly material has no flour but gives a very weak pale yellow crush cut.

SANDSTONE:off wh,silty-f,dom vf, sbang-sbrnd,mod srt,abdt wh arg mtx,v strng calc cmt,mod sil cmt, tr liths,comm qtz grns,rr calcite lined frac,v hd,no vis por,no intergranular oil flour.

SANDSTONE:off wh,silty-f,dom vf, sbang-sbrnd,mod srt,abdt wh arg mtx,v strng calc cmt,mod sil cmt, tr liths,comm qtz grns,rr calcite lined frac,v hd,no vis por,no intergranular oil flour.

COAL:blk,dk brn/blk,svbit,ea i/p, mnr silty,mod hd-hd,sbbkly,hckly.

SURVEY @ 3464.6m: 1.56° 154.76T

NO CO2
NO H2S

SILTY CLAYSTONE:med-dk gry,dk gry/brn,aren i/p,com micmic,tr carb spks,tr lt brn & off wh liths,pred frm,mod hd-hd i/p,sbbkly,sbfiss i/p.

SILTY CLAYSTONE:med-dk gry,med brn/gry,aren i/p,com micmic,tr carb spks & off wh liths,frm-mod hd, sbbkly.

SURVEY @ 3491.68m: 1.37° 50.64T

SANDSTONE:off wh,silty-f,dom vf, sbang-sbrnd,mod srt,abdt wh arg mtx,v strng calc cmt,mod sil cmt, tr liths,comm qtz grns,rr calcite lined frac,v hd,no vis por,no

